

Z-text SMS Modem Windows XP Installation Instructions

© 2004 ... NTS Telecom Limited



This guide is intended to help you with the installation of the Z-text software, it only illustrates the stages of installation where you have a choice. All the automatic Windows XP processes like the bubbles indicating "New Hardware Found" or the "Updating System Configuration, Please Wait" windows have been omitted. Should you wish to stop the installation then you can select the **Cancel** button at any time.

Install the software first!!

Do not connect the USB cable to the Z-text SMS Modem until instructed.

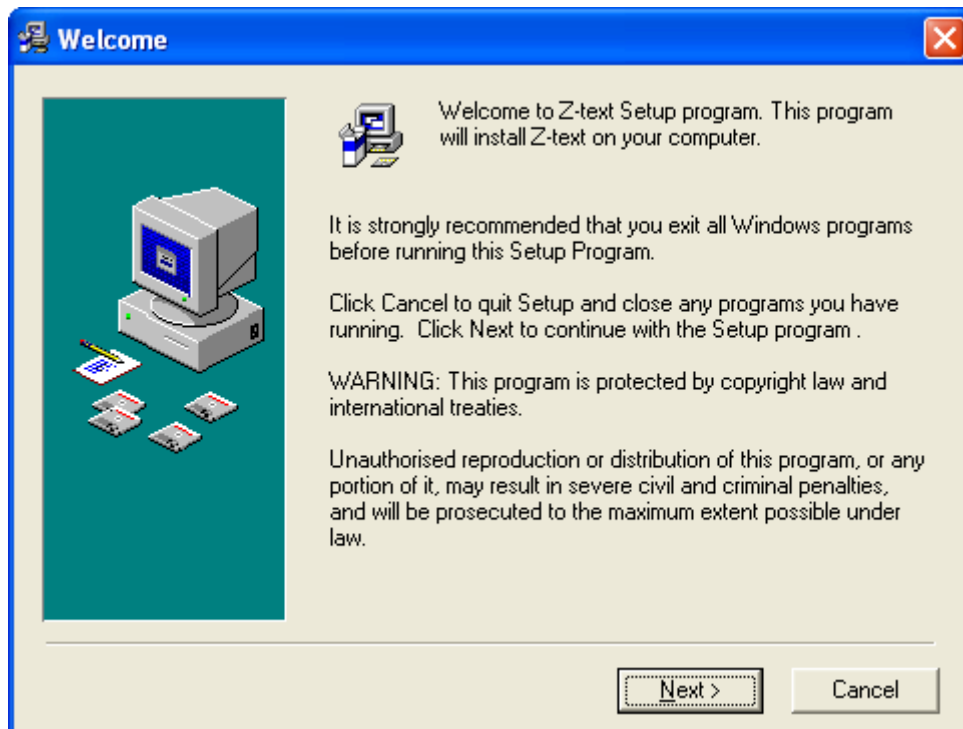
Installation Method

1. Install the Z-text USB modem Driver Set on your hard drive.
2. Install the Z-text Software on your hard drive.
3. Connection of the USB cable.
4. Install the Z-text USB modem driver.
5. Install the Z-text USB modem communications (COM) driver.

With the Z-text CD in your CD ROM drive the installation program should start automatically. If not follow these steps:

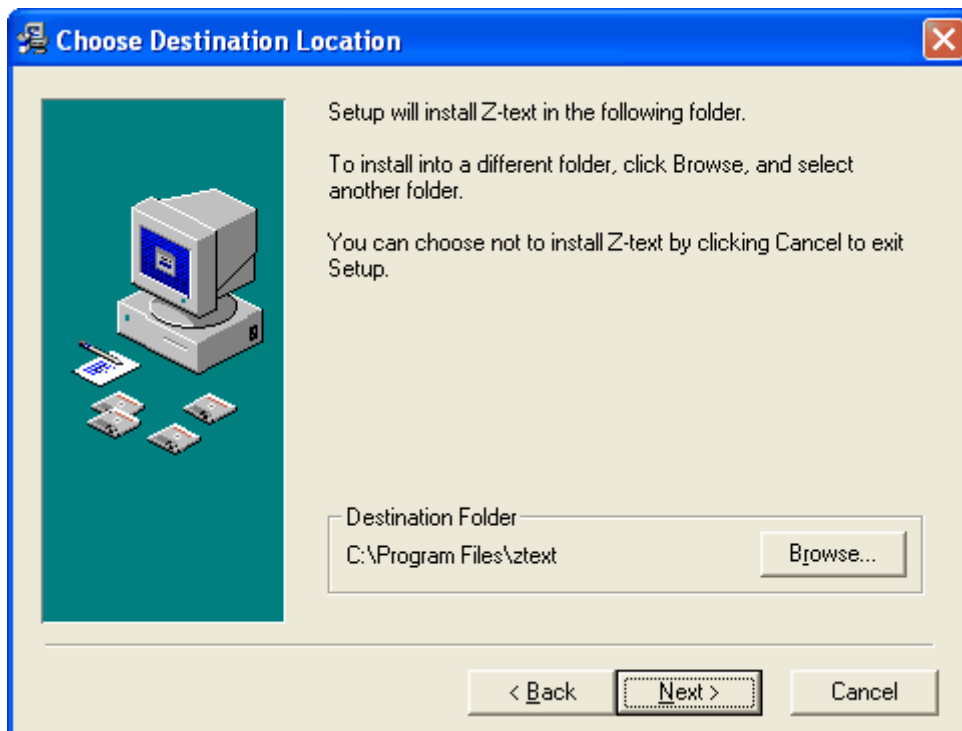
- Click on your **Start Menu** and select **Run**.
- Type **D:\setup.exe** and press **Enter** (where D: is the letter of your CD-ROM drive)

After a short while the Welcome screen will be displayed.



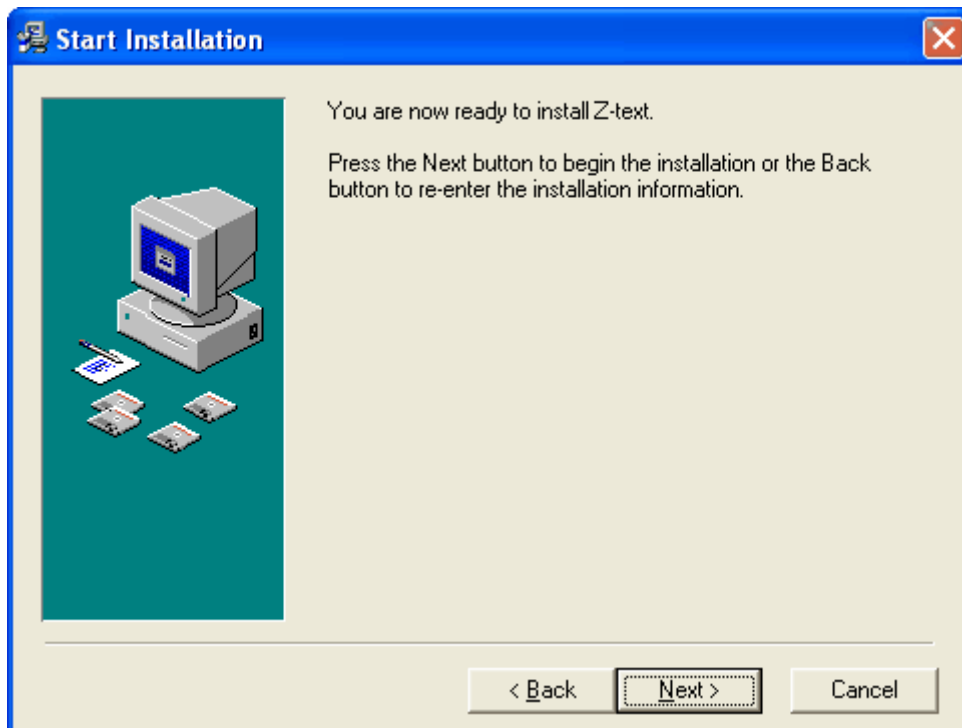
- Click on the **Next** button.

- Select **Next** (highly recommended) otherwise choose the installation location yourself by selecting the **Browse** button.



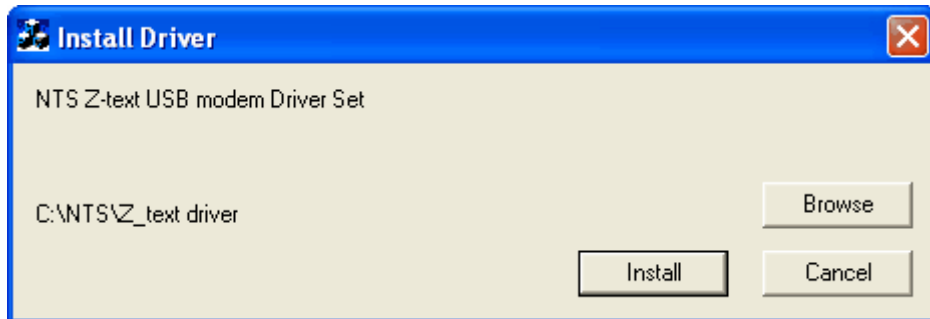
With the installation destination chosen it is now time to install the software.

- Select **Next** to continue.



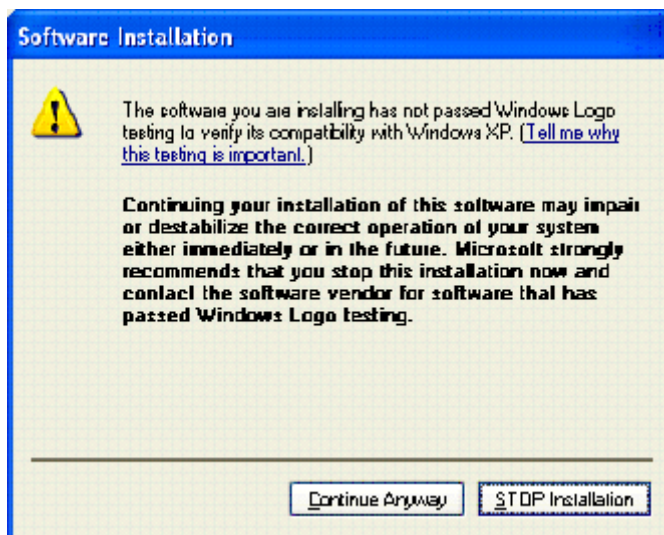
Windows XP will install the NTS Z-text USB modem Driver Set onto your hard drive. These will be saved in their default location of C:\NTS\Z_text driver. This stage is required so that *when* the USB cable is connected (USB connection later) it will find and install the driver components automatically making the driver installation easier.

- Select **Install** (recommended) to continue or **Browse** to choose a different location.



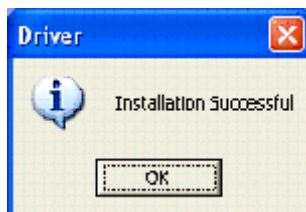
Due to our policy of continual development the following message will appear twice.

- Select **Continue Anyway** twice.

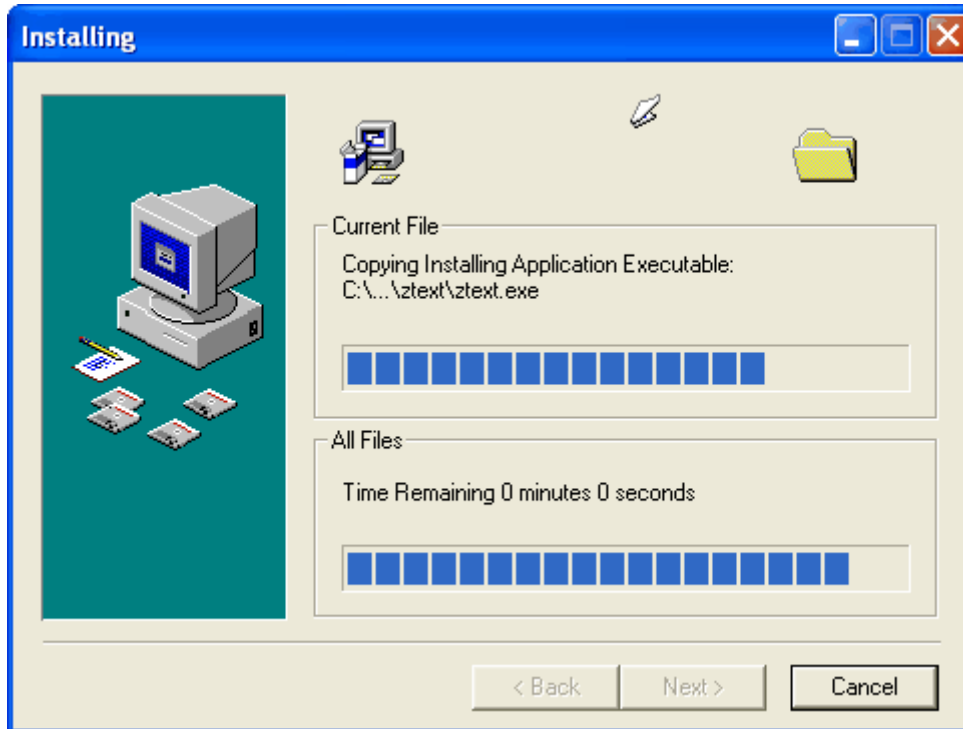


The NTS Z-text USB modem Driver Set has been successfully loaded onto your hard drive.

- Select **OK** to continue.

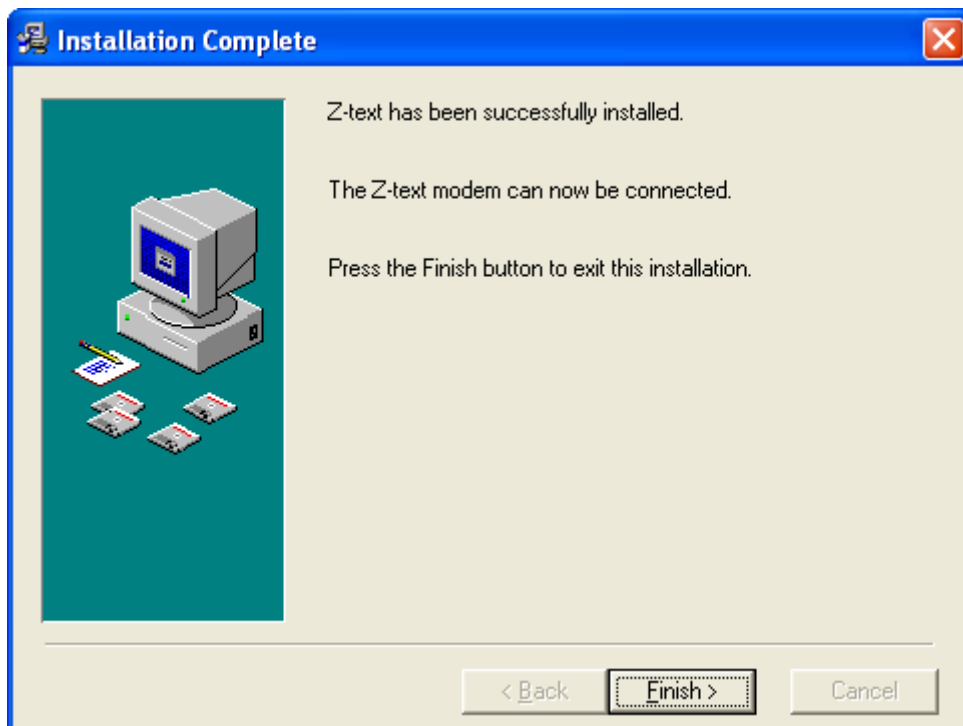


With the NTS Z-text USB modem Driver Set installed it is now the time to install the Z-text software.



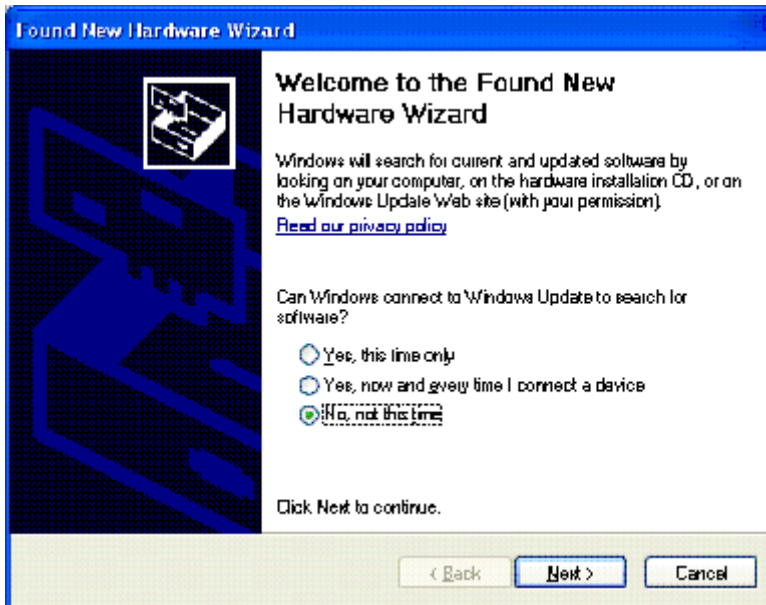
With the NTS Z-text USB modem Driver Set and the Z-text software installed it is now time to connect the USB cable.

- Select **Finish** to continue or to complete the installation (the **Finish** button can be selected now or after the USB cable has been connected and the driver components installed.)



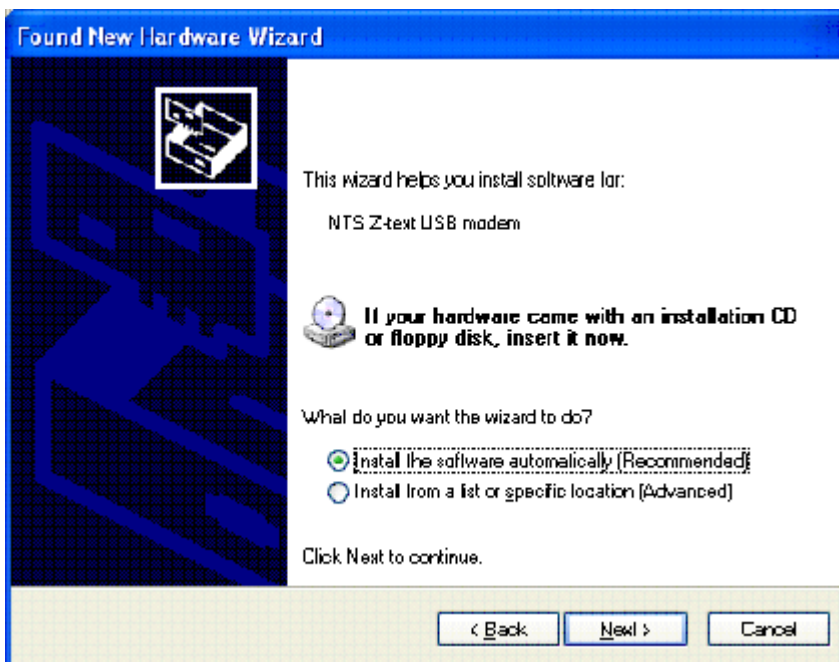
On detection of the Z-text SMS Modem and if you have installed the Windows Service Pack 2 you will see the following displayed.

- Select **No, not this time**.

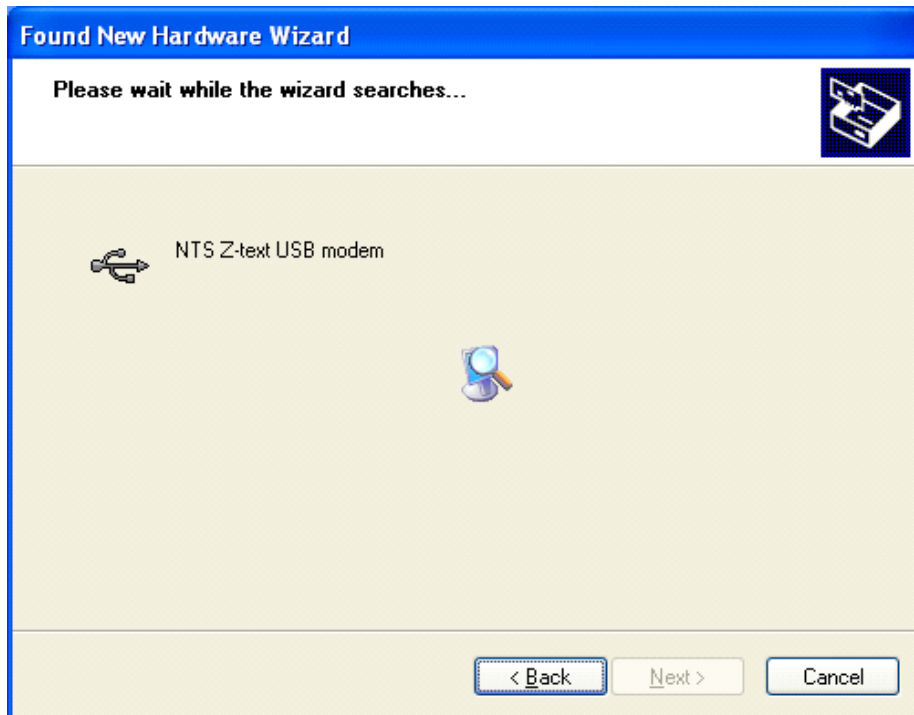


It is at this stage where you have to install 2 drivers.

- Select **Install the software automatically (Recommended)** and then **Next**.



Please wait while the NTS Z-text USB modem Driver Set is being located and the relevant driver found.

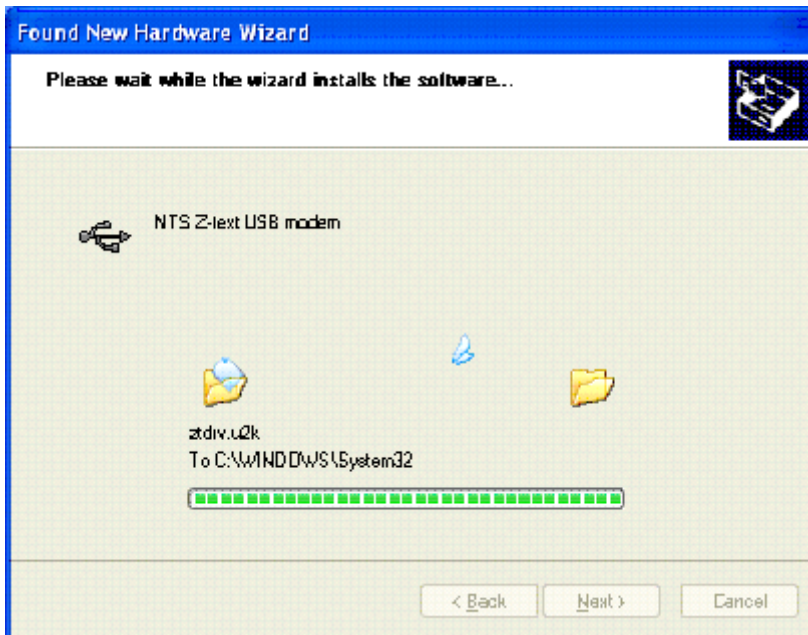


Due to our policy of continual development the following message will appear.

- Select **Continue Anyway**.



It is at this point that the NTS Z-text USB modem driver is installed in to the Windows XP operating system.

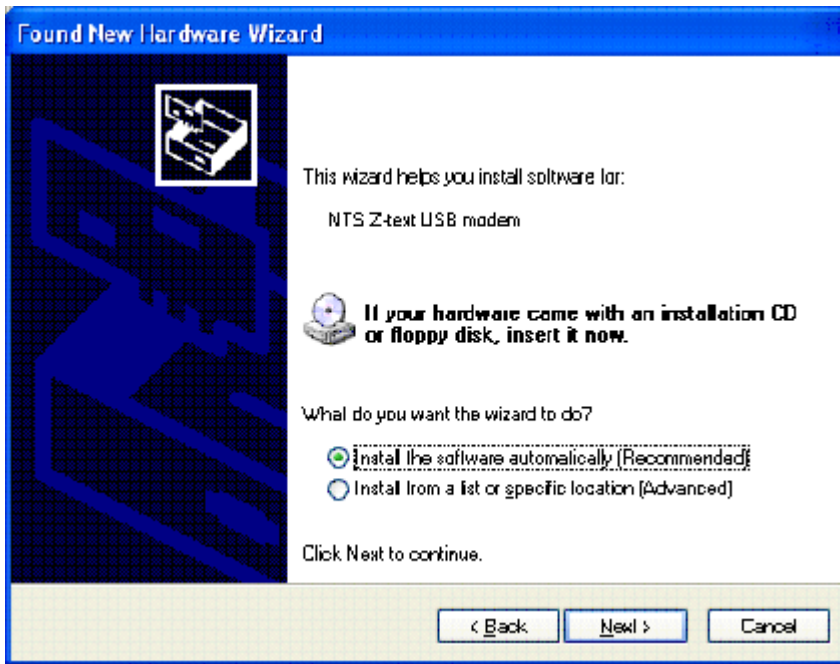


- Select **Finish** to complete the USB driver installation.

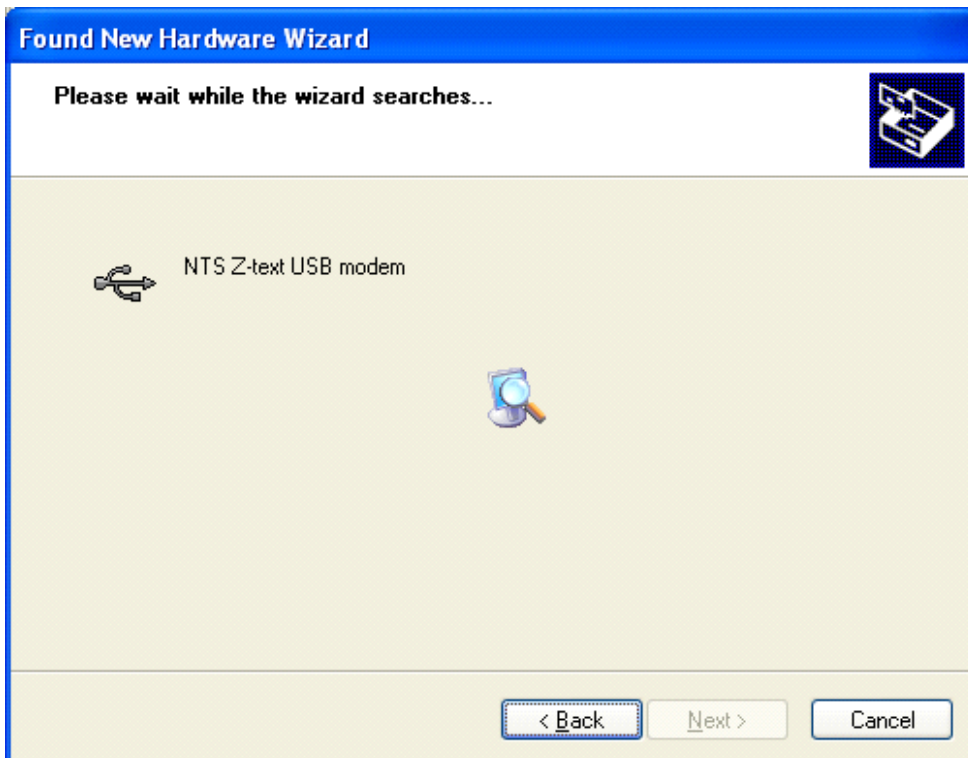


With the USB driver installed it is now time to install the driver to control the communications (COM) port.

- Select **Install the software automatically (Recommended)** and then **Next**.



Please wait while the NTS Z-text USB modem Driver Set is being located and the relevant driver found.

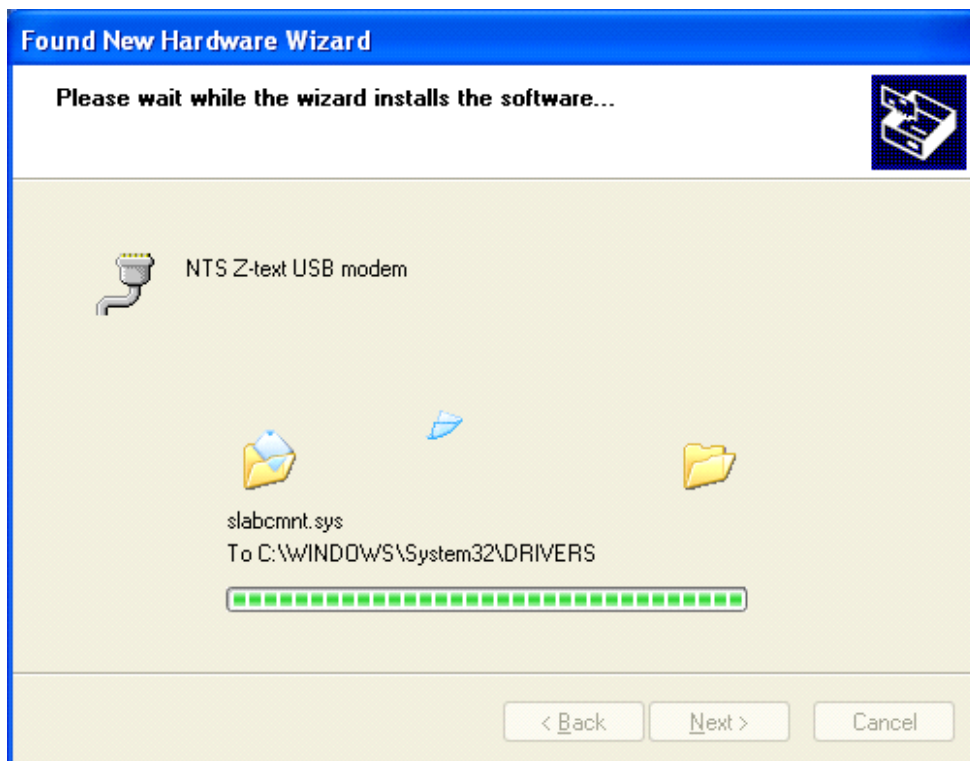


Due to our policy of continual development the following message will appear.

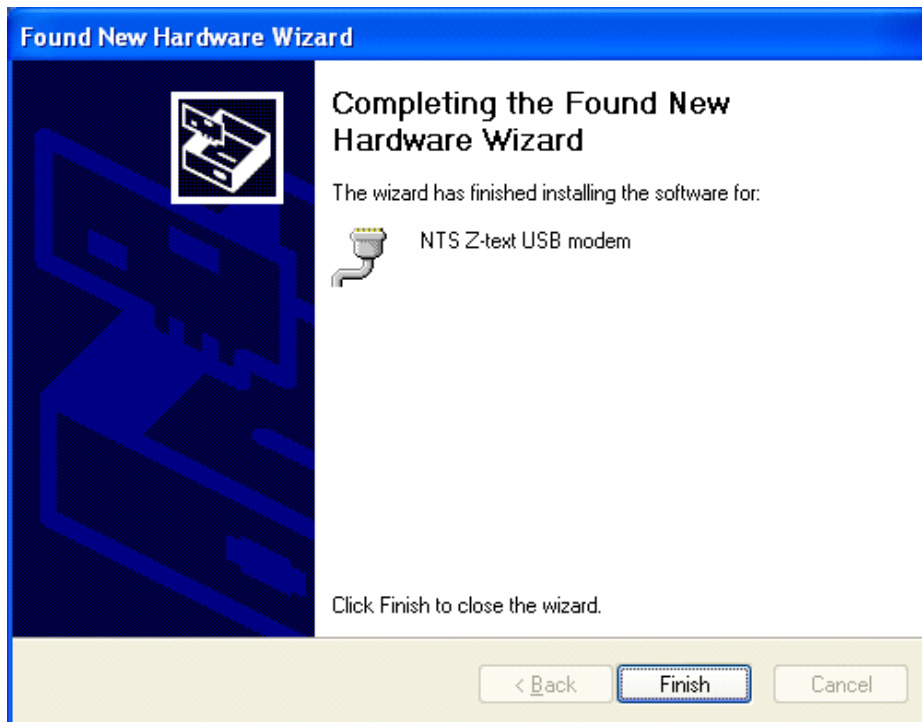
- Select **Continue Anyway**.



It is at this point that the NTS Z-text USB modem COM driver is installed in to the Windows XP operating system.



- Select **Finish** to complete the USB driver installation.



- Select **Finish** to complete the Z-text software installation (if you have not already done so.)

With the Z-text software and the necessary drivers installed it is now time to start Z-texting!!
For further help with the other connections please refer to the Z-text User Manual.