



MS-010-001-01 Configuration of SMS Server with a Z-Text Modem.

Document scope:

This document describes how to install and configure the Z-Text modem with m:science SMS Server.

Installing the Z-Text Modem on Your Computer

Before installing, the m:science software, be sure to install the Z-Text modem by following the instructions as specified in the user manual or XP installation guide as required. Both are available from the Z-Text web site:

<http://www.z-text.co.uk/documents/ZtestUserGuide.pdf>

<http://www.z-text.co.uk/documents/WindowsXPInstallation.pdf>

Note that for a more lightweight installation, it is possible to install just the drivers by running driver.exe from the 'driver' sub folder of the installation media.

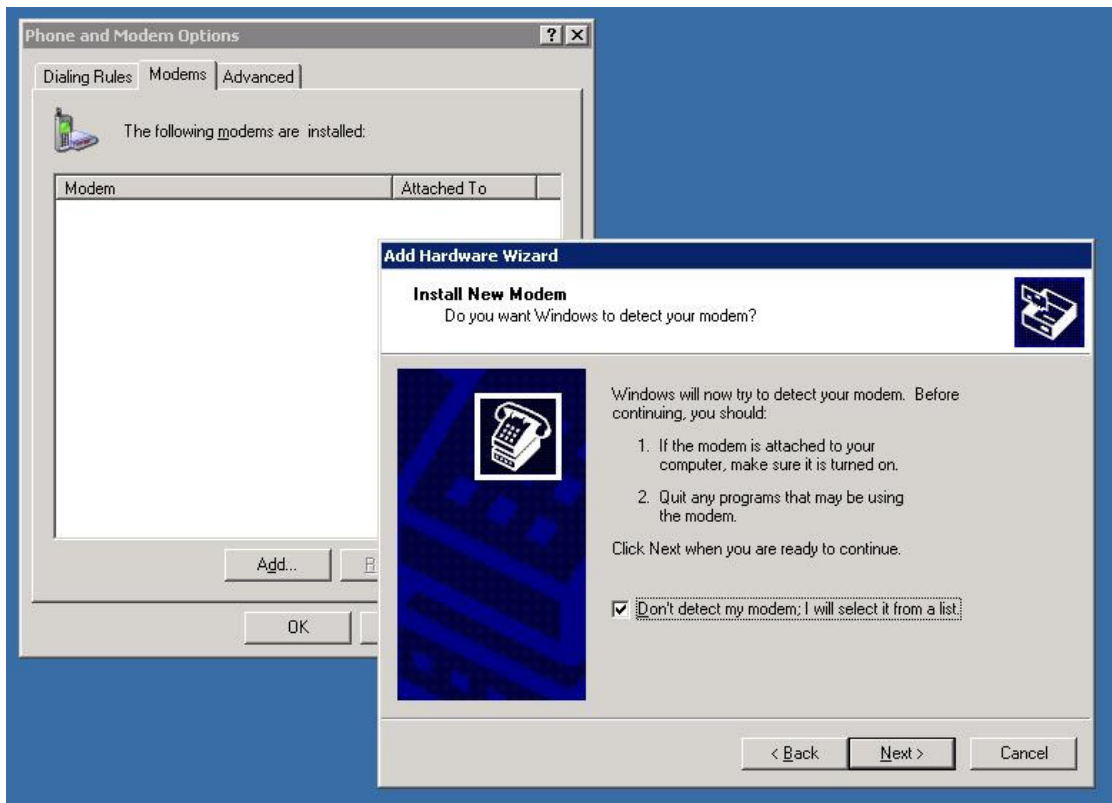
Once completed; if you installed the full application, send a couple of test messages to verify the correct functioning of the modem and the phone line connection.

Setting up a Windows Modem

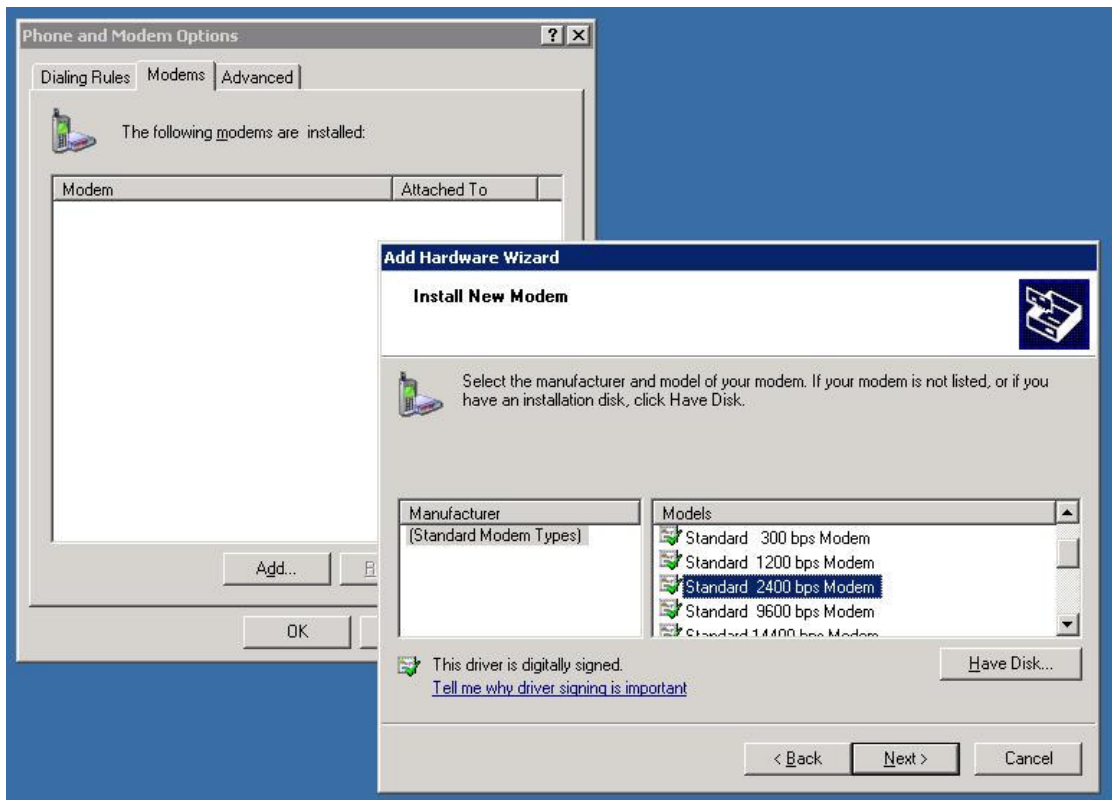
Before doing anything else, ensure you exit the Z-Text software to allow other programs to access the Z-Text modem. This can be done by closing the Z-Text software window and right clicking on the turquoise 'Z' in the system tray and selecting 'Exit'.

Note that the Z-text application "Pins" itself to the Windows Startup menu. Z-text should be deleted from the Startup menu as is not to be the default messaging application.

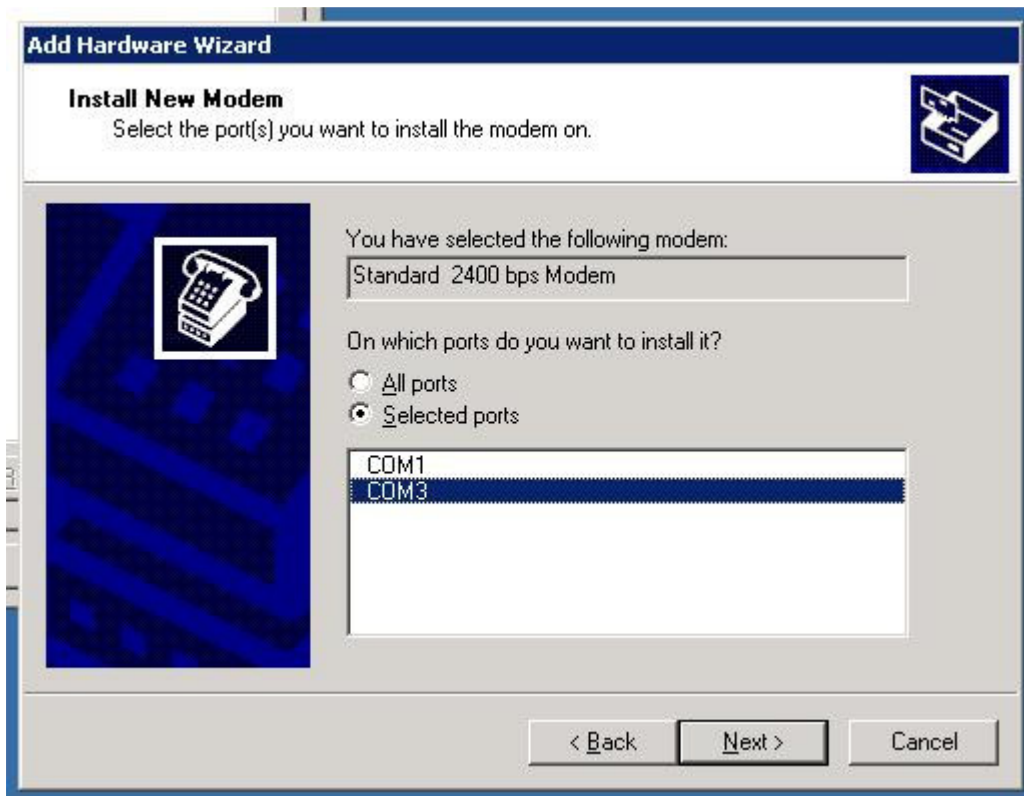
- Open Control Panel , Select 'Phone and Modem Options' and click 'Add'



- Check 'Don't detect my modem; I will select it from a list' and click 'Next'



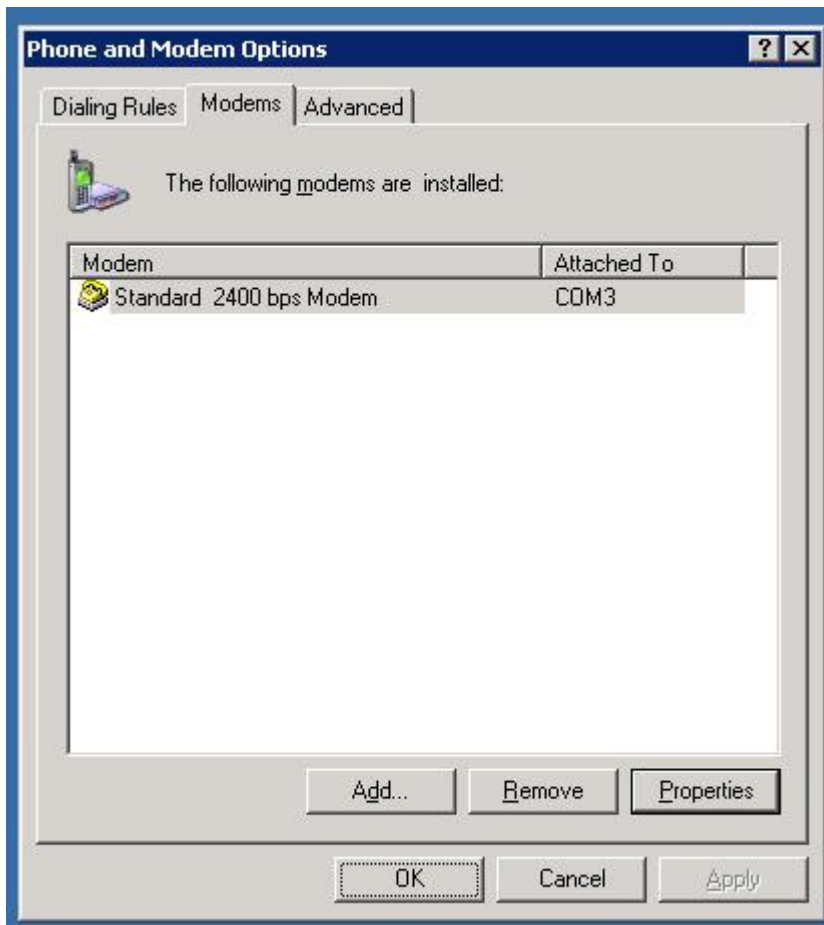
- Select 'Standard 2400 bps Modem' and click 'Next'



- Select the new COM port which was added when the modem was installed. This will typically be COM3. Having done this, select 'Next'



- Select 'Finish' to return to the modem page.



- Click 'OK' to close control Panel

Installing the m:science Software

Start the m:science SMS Server installation wizard either from the package downloaded from the web site (<http://www.m-science.com>) or from the CD supplied to you.

When prompted, select the view Installation Guide.

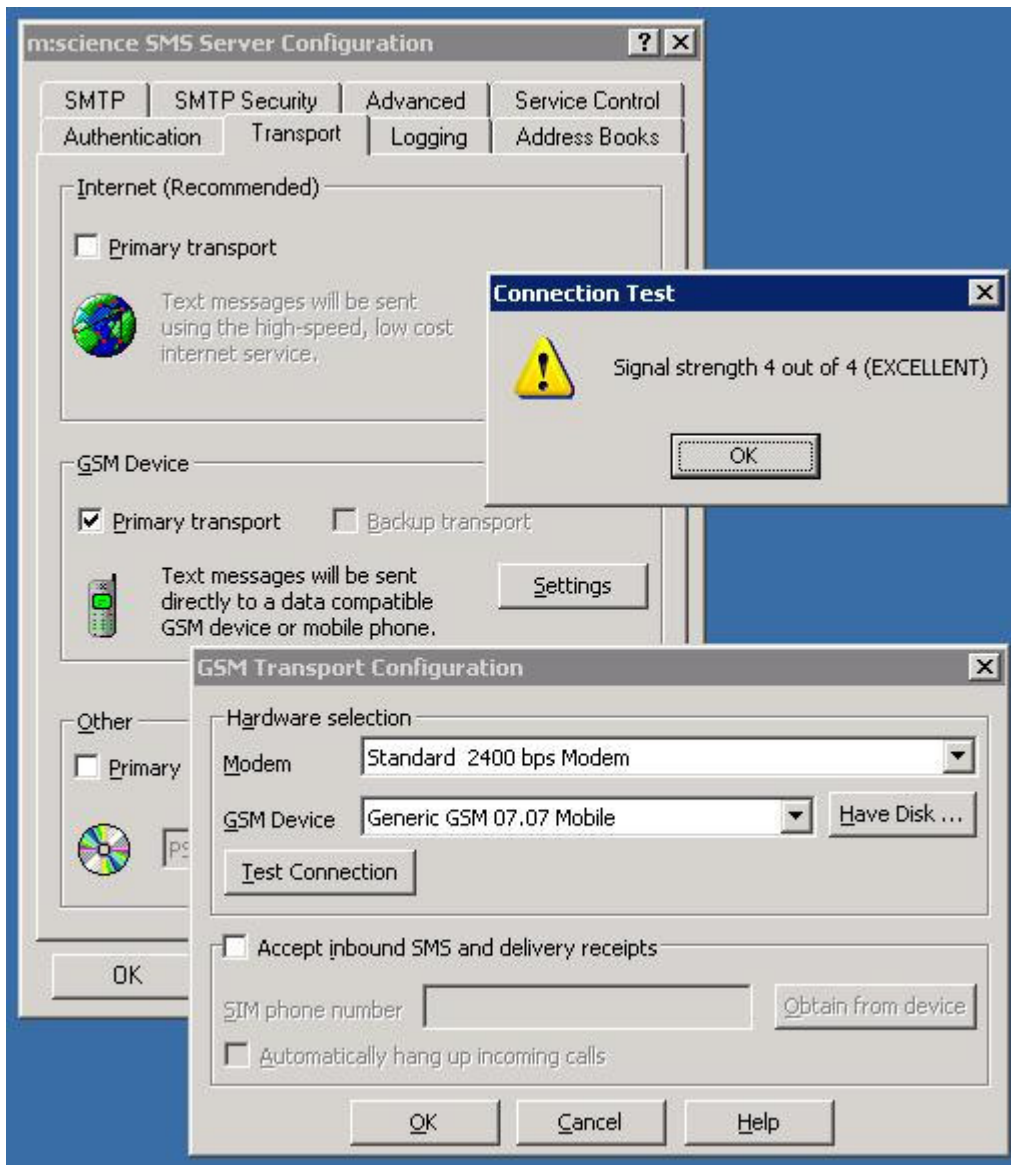
If you are intending to use the Z-Text modem as a primary transport, follow the steps detailed in here to install the software for 'Manual' configuration otherwise, follow the steps for configuring the server for your required primary transport.

Configuring the GSM Transport

- Open up Control Panel and select 'm:science SMS Server'



- Navigate to the Service Control tab and ensure that all of the services have been stopped.



- Select the Transport Tab
- Check GSM Device as the Primary Transport (or backup if so required)
- Click Settings
- Select 'Standard 2400 bps Modem' as the Modem and 'Generic GSM 07.07 Mobile' as the GSM Device.
- 'Accept inbound SMS and delivery receipts' should be unchecked.
- Click 'Test Connection'
- You should see the signal strength message displayed above.
- Having seen this, you will be prompted for a destination phone number to send a message to.
- Click 'Send Now'
- A message will be displayed saying 'Success but no Reference Number returned'. This can be ignored.
- Click ok, to close the 'GSM Transport Configuration'
- Select the 'Service Control Tab' and ensure that the service is started.
- Click ok, to close the 'm:science SMS Server Configuration'
- Open the SMS Manager

- Open the 'Send Text Message' tool and test that a test message can be sent successfully.